

Greater Manchester off-road motorcycling project covers the Red Rose Forest and the Pennine Edge Forest areas.

It is being co-ordinated by Red Rose Forest with the support of a multi-agency partnership involving representatives from Manchester, Salford, Trafford, Wigan, Bury, Bolton, Rochdale and Oldham, Greater Manchester Police and Government Office North West. This partnership approach is central to the success of the project.

If you would like to find out more about the Greater Manchester off-road motorcycle project or to get involved please contact the Community Liaison Manager 0161 872 1660.

Red Rose Forest is an environmental regeneration initiative. It is a partnership of The Countryside Agency, the Forestry Commission the Boroughs of Bolton, Bury, Trafford and Wigan and the cities of Manchester and Salford. Over 40 years we are planting more than 25 million trees, across 292 square miles of the area with the help of local communities, businesses and partners, as the framework for a programme of regeneration and renewal that will make Greater Manchester a greener and more satisfying place to live.

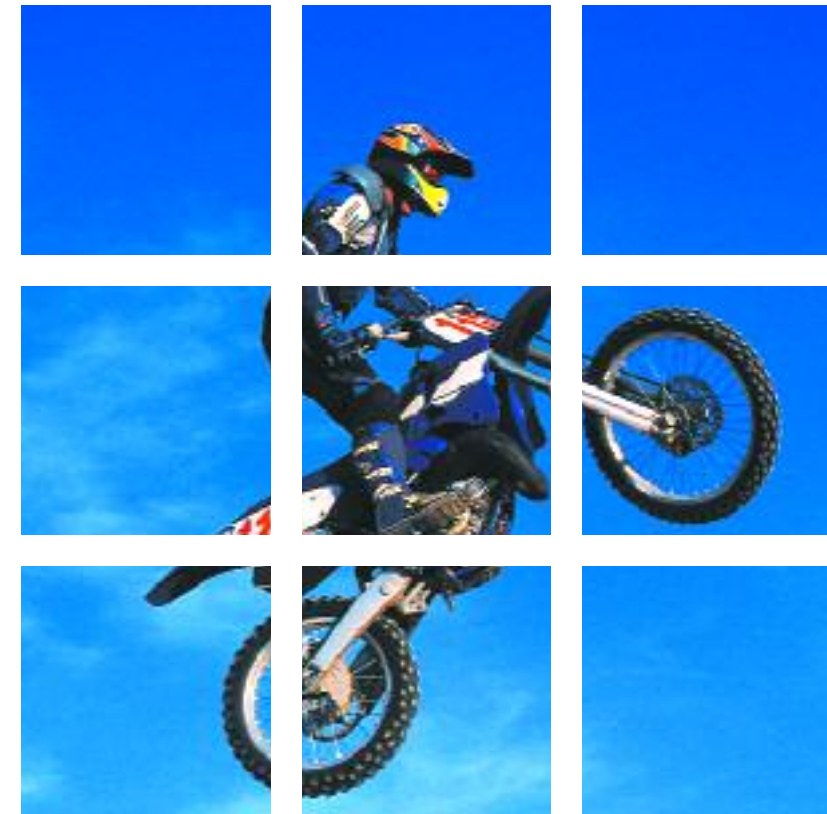
redroseforest

Dock Office Trafford Road
Salford Quays Salford M50 3XB

tel 0161 872 1660

fax 0161 872 1680 team@redroseforest.co.uk

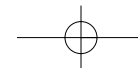
www.redroseforest.co.uk

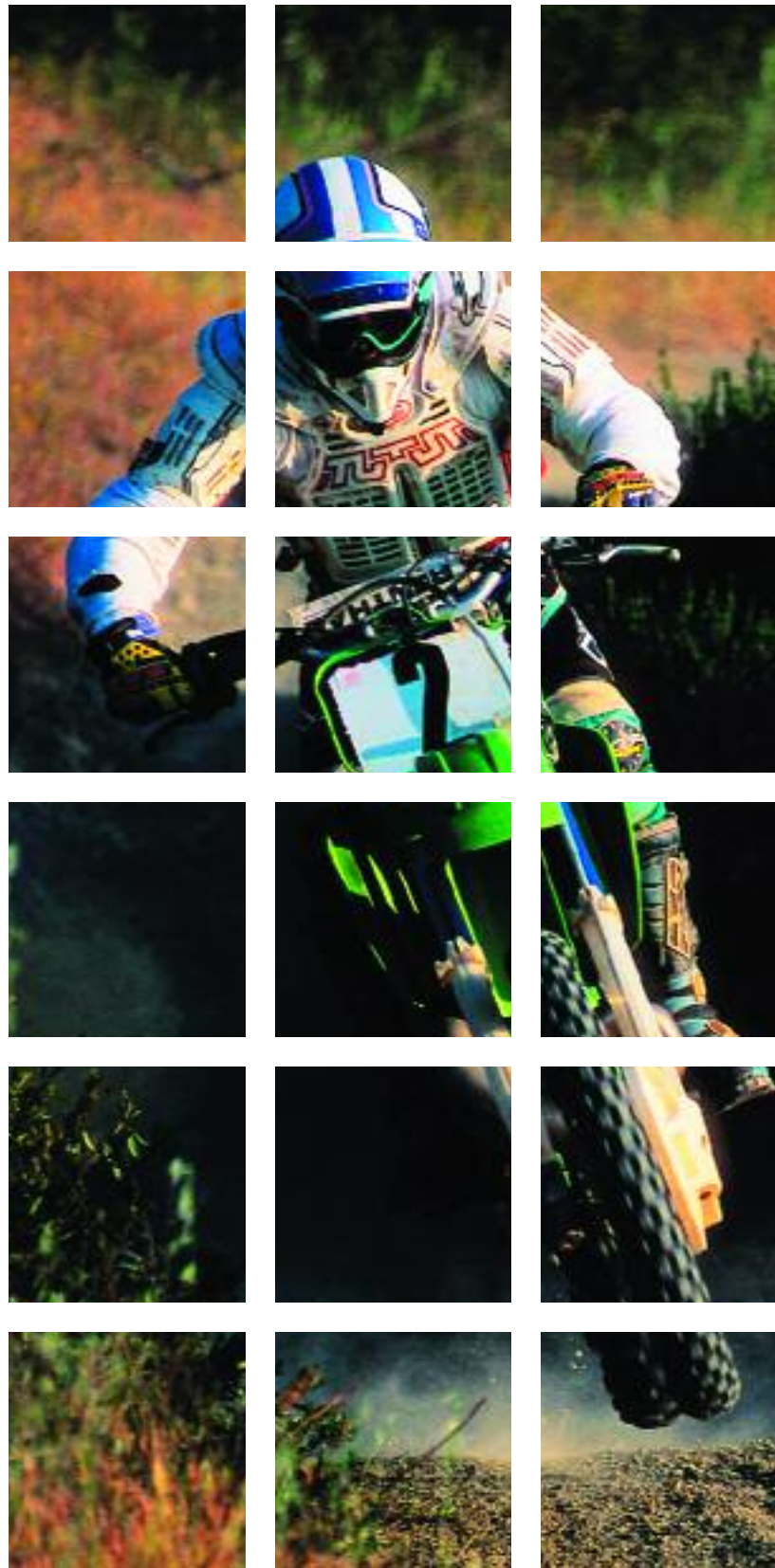


redroseforest

Off Road Motorcycling

**A Greater
Manchester Approach**





The Greater Manchester off-road motorcycling project is developing solutions to illegal wheeled activities on green sites across the county.

Whether it is off-road motorbikes being used without a licence, under aged riders or simply bike enthusiasts who ride on areas of green space where there isn't appropriate provision for them, it is a problem for riders and the wider community alike.

Off-road motorcycling on sites where it is not permitted can cause a great deal of damage, as well as making local communities afraid to use many of their local green spaces, parks, playing fields and woodlands.

Yet, off-road motorcycling and other wheeled activities are popular and legitimate sports. Pursued in the right way, wheeled sports are a great activity, which help to develop skills, social awareness and social responsibility.

Barriers alone will not solve the problem. Wheeled sports are extremely popular, so preventing access to one site will simply move the problem of illegal activity elsewhere.

The off-road motorcycling project is looking at:

- Site security measures and law enforcement alongside
- Youth and community projects; and
- Creating and maintaining legal off-road motorcycling sites

This rounded approach aims to deliver safe and appropriate solutions that all members of the community are happy with. It will enable a large number of sports enthusiasts to get a great deal of enjoyment from legitimate sites, whilst allowing communities to continue enjoying their local green spaces safely.